

COEI-2-CONBAC Methods of microbiological analysis

Bacteriological control

Analysis common to all monographies

- 1. Preliminary rehydration of yeasts (Saccharomyces and non-Saccharomyces): ADY (Active Dry Yeasts), AFY (Active Frozen Yeasts), COY (Compressed Yeasts), CRY (Cream Yeast Preparations), ENY (Encapsulated [beads] or Immobilised Yeasts), “levain de tirage” (yeast starter for tirage)**

Weigh approx. 10 g of the preparation under sterile conditions (note the exact weight for final calculation of the concentration).

Adjust to 100 mL with sterile peptone saline water* under sterile conditions at 20-37 °C or according to the manufacturer’s recommendations.

Slowly homogenise using a rod, a stomacher technique or a magnetic stirrer for 5 min.

Stop stirring and allow to stand for 20 min at room temperature of between 20-30 °C.

Homogenise again at room temperature for 5 min.

Under sterile conditions, prepare serial decimal dilutions in water or sterile peptone saline water* and proceed with microbiological controls on the homogenised stock solution.

In the case of “levains de tirage” used for sparkling wines, sample 1 mL under sterile conditions, prepare serial decimal dilutions in water or sterile peptone saline water* and proceed with microbiological controls on the homogenised stock solution

* Peptone salt solution: bacteriological peptone 1 g/L, sodium chloride 8.5 g/L, final pH 7.0

- 2. Preliminary rehydration of preparations of lactic acid bacteria**

Weigh approx. 10 g of preparation of lactic acid bacteria under sterile conditions (note the exact weight for final calculation of the concentration).

Adjust to 100 mL with sterile peptone saline water* under sterile conditions (25 °C).

Homogenise using a magnetic stirrer or a stomacher technique for 5 min.

Stop stirring and allow to stand for 20 min at room temperature of between 20-30 °C.

Homogenise again at room temperature for 5 min.

Under sterile conditions, prepare serial decimal dilutions using water or sterile

INTERNATIONAL OENOLOGICAL CODEX

Bacteriological control

peptone saline water* and proceed with microbiological controls.

* Peptone salt solution: bacteriological peptone 1 g/L, sodium chloride 8.5 g/L, final pH 7.0

3. Microbiological control of other products in the International Oenological Codex

(products for which the control of yeasts, bacteria and/or moulds is requested)

Weigh approx. 10 g of the oenological product to control under sterile conditions (note the exact weight for final calculation of the concentration).

Adjust to 100 mL with sterile peptone saline water* under sterile conditions.

Homogenise using a magnetic stirrer or a stomacher technique for 5 min.

Under sterile conditions, prepare serial decimal dilutions in water or sterile peptone saline water* and proceed with microbiological controls.

* Peptone salt solution: bacteriological peptone 1 g/L, sodium chloride 8.5 g/L, final pH 7.0

4. Enumeration of total yeasts

YM agar medium (malt wickerham)

| | |
|----------------------|--------------|
| Bacteriological agar | 15 g |
| Yeast extract | 3 g |
| Malt extract | 3 g |
| Peptone | 5 g |
| Glucose | 10 g |
| Water | q.s. 1000 mL |

YPD

| | |
|---------------|------|
| Yeast extract | 10 g |
| Peptone | 20 g |
| Glucose | 20 g |
| Agar | 10 g |

INTERNATIONAL OENOLOGICAL CODEX

Bacteriological control

Water q.s. 1000 mL

Just after preparation, autoclave the medium at 120 °C for 20 min.

In case of prolonged incubation time, add chloramphenicol to a 100 mg/L final concentration to prevent bacterial growth.

After inoculation with the appropriate dilutions of the sample in order to reach 30-300 colonies, incubate the dishes at 25-30 °C under aerobic conditions for 48 to 72 hours.

Count the number of CFU in the dishes containing 30-300 colonies and refer to the weight of the dry matter.

In addition to the media proposed, any equivalent medium internationally recognised for growth of these microorganisms may be used.

5. Enumeration of non-*Saccharomyces* yeasts

5.1. Lysine medium

The yeasts are cultivated in the lysine medium whose composition is as follows:

| | |
|----------------------------|--------------|
| Agar | 20 g |
| L-lysine monohydrochloride | 5 g |
| Glucose | 1 g |
| Bromocresol purple | 0.015 g |
| Water | q.s 1000 mL |
| Adjust to | pH 6.8 ± 0.2 |

Bring to the boil for 1 min to ensure complete dissolution, then autoclave at 120°C for 20 min.

In case of prolonged incubation time, add chloramphenicol to a 100 mg/L final concentration to prevent bacterial growth.

After inoculation with the dilutions of the sample, the dishes are incubated at 25°C or 30°C for 48 to 96 hours.

Count the number of CFU (dishes of 30-300 colonies) and refer to the weight of the dry matter.

In addition to the media proposed, any equivalent medium internationally recognised for growth of these microorganisms may be used.

INTERNATIONAL OENOLOGICAL CODEX

Bacteriological control

5.2. YPD medium with addition of cycloheximide at 10 mg/L, and incubation for 6-7 days under aerobic conditions

In case of prolonged incubation time, add chloramphenicol to a 100 mg/L final concentration to prevent bacterial growth.

6. Enumeration of viable lactic acid bacteria

Modified MRS (Man, Rogosa and Sharpe)

The bacteria are cultivated in a MRS medium (Man, Rogosa, Sharpe 1960), with addition of tomato juice, and the composition is as follows:

| | |
|---------------------------------|-------------|
| Agar agar | 15 g |
| Bacto-peptone | 10 g |
| Meat extract | 8 g |
| Yeast extract | 4 g |
| Sodium acetate | 5 g |
| K ₂ HPO ₄ | 2 g |
| Trisodium citrate | 2 g |
| MgSO ₄ at 100 mg/L | 2.5 mL |
| MnSO ₄ at 20 mg/L | 2 mL |
| Tween 80 | 1 mL |
| DL malic acid | 5 g |
| Tomato juice ^[1] | 200 mL |
| Glucose | 20 g |
| or glucose 10 g +fructose | 10 g+10 g |
| Adjust (HCl or NaOH) | q.s. pH 4.8 |

INTERNATIONAL OENOLOGICAL CODEX

Bacteriological control

Distilled water q.s. 1000 mL

(q.s. = quantity sufficient)

Autoclave at 110 °C for 20 min.

When pouring the medium into the Petri dish, add pimaricine to a 10 mg/L final concentration to inhibit the growth of yeast and mould.

Incubate at 25°C under anaerobic conditions for 8 to 10 days.

In addition to the media proposed, any equivalent medium internationally recognised for growth of these microorganisms may be used.

7. Enumeration of mould

| | |
|-------------------------------------|--------------|
| Czapeck-Dox/s agar medium Agar agar | 15 g |
| Saccharose | 30 g |
| NaNO ₃ | 3 g |
| K ₂ HPO ₄ | 1 g |
| MgSO ₄ | 0.5 g |
| KCl | 0.5 g |
| FeSO ₄ | 0.01 g |
| Water | q.s. 1000 mL |
| Adjust to | pH 7 |

Autoclave at 120°C for 20 min.

Add chloramphenicol directly to the medium in the Petri dish to a 100 mg/L final concentration to inhibit the growth of bacteria.

Incubate at 20°C under aerobic conditions for 10 days.

In addition to the media proposed, any equivalent medium internationally recognised for growth of these microorganisms may be used.

8. Enumeration of acetic bacteria

INTERNATIONAL OENOLOGICAL CODEX

Bacteriological control

| | |
|----------------------|--------------|
| Bacteriological agar | 20 g |
| Yeast extract | 5 g |
| Casein amino acids | 5 g |
| Glucose | 10 g |
| Adjust to | pH 4.5 |
| Water | q.s. 1000 mL |

Autoclave at 120°C for 20 min.

When pouring the medium into the Petri dish, add pimaricine to a 100 mg/L final concentration, to inhibit the growth of yeast and mould, and penicillin to a 12.5 mg/L final concentration to inhibit the growth of lactic acid bacteria.

Incubate at 25 °C under aerobic conditions for 4 days.

In addition to the media proposed, any equivalent medium internationally recognised for growth of these microorganisms may be used.

9. Count of *Salmonella*

9.1. Principle

The sample undergoes a pre-enrichment phase in peptoned buffered water for 16 to 20 hours at 37°C. Then the aliquot part of this mixture is inoculated for culture. This contains a specific medium and 2 special tubes (made up of 2 parts) and is incubated 24 hours at 41°C. *Salmonella* migrates from the bottom (selective medium) to the top part of the tube (indicator medium). The presence of *Salmonella* is indicated by a change in colour of this solution.

9.2. Apparatus and analytical conditions

Preparation for culture is carried out in the sterile zone ensured by the Bunsen burner. The soiled material is submitted for destruction by autoclave for 1 hour at 120°C or by total immersion in a bleaching agent for at least 18 hours (See cleaning procedure).

- Sterile glass test tube in 125 ml
- sterile stomacher bag

INTERNATIONAL OENOLOGICAL CODEX

Bacteriological control

- Closing barrette
- stomacher
- Sterile glass tubes 16x160 mm.
- Cottoned glass test tubes 20x220
- 2 ml sterile plastic pipettes graduated by 0.1 ml
- 10 ml sterile plastic pipettes graduated by 0.1 ml
- Tube shaker
- Method for culture to be rehydrated.
- 2 ml sterile needle with plastic sterile syringe.
- Tweezer forceps
- Wrench for unscrewing tubes A and B for culture method
- Clean glass slide
- Sterile cottoned Pasteur pipettes
- Monosaccharide
- Oven at 41°C ± 1°C
- Oven at 37°C ± 1°C
- Bunsen burner

9.3. Reagents

- Sterile peptoned water (SPW)
- Sterile distilled water (SDW)
- Sterile 500 ml sealed flask filled with 125 ml of SPW
- Sterile 500 ml sealed flask filled with 225 ml of SPW
- Special medium for *Salmonella*: SRTEM
- Novobiocin disk (1.8 mg of novobiocin)
- Hektoën agar agar (see DOMIC-08)
- API 20E gallery

INTERNATIONAL OENOLOGICAL CODEX

Bacteriological control

- Agar agar tubes TSAYE inclined
- Sterile NaCl at 8.5 g/l solution
- Anti-Salmonella serum

9.4. Procedure

9.4.1. Preparation of reference suspension

This differs according to nature of products and dilution rate.

Add a test portion of 25 grams or millilitres of the product in a stomacher bag to a nine fold greater amount of peptoned water.

Close the bag by heat welding or using a barrette.

Grind in a stomacher for 1 minute.

9.4.1.1. Pre-enrichment phase in a non selective liquid medium:

- Incubate the reference suspension for 16 to 20 hours at $37^{\circ}\text{C} \pm 1^{\circ}\text{C}$.

2. Enrichment in selected liquid mediums

Preparation of culture measures

- unscrew the lid of the culture container;
- add SDW up to line 1 as marked on the container.

Note: The base of tubes A and B must be located under water level.

- adjust the needle to the syringe and check that the syringe plunger is pushed in (absence of air);
- vertically introduce the needle to the syringe in the rubber disc in the centre of the stopper in tube A (blue stopper). Check that the needle is visible under the stopper;
- carefully withdraw the syringe up until the liquid reaches line 3 on the container.

Note: Do not draw up liquid into the syringe.

This operation should take approximately 5 seconds.

- Repeat this operation with tube B (red stopper);
- Close the stopper from the culture container tightly;

INTERNATIONAL OENOLOGICAL CODEX

Bacteriological control

- Press the side of the recipient on a tube shaker and maintain at least 5 seconds.

Note: the liquid in tubes A and B must be shaken vigorously.

- Let the culture at least 5 minutes;
- Unscrew the culture container's stopper and pour in the SRTEM medium until the level reaches line 2 as marked on the container;
- Add a novobiocin disc using a tweezer forceps;
- Remove the stoppers from tubes A (blue) and B (red) using a wrench, then dispose of the stoppers.

Note: avoid touching the tubes and the inside wall of the container. Inoculation of culture container

- Homogenise the pre-enriched culture;
- Identify the culture container. Write down the analysis number on the lid.
- Unscrew the lid.
- Using a 2 ml pipette introduce 1 ml of pre-enriched culture in the culture container.
- Tighten the lid on the culture container.
- Write down the incubation time and date.
- Incubate 24 hours \pm 30 min at 41°C \pm 1°C in a strictly vertical position.

2. Reading and interpretation

This is carried out by observing the top part of tubes A and B through the container walls.

| Reaction | Tube A | Tube B |
|----------|--------------------------------|---------------------------------------|
| Positive | All degrees of black colouring | All degrees of red or black colouring |
| Negative | Absence of black colouring | Absence of red or black colouring |

The possible presence of *Salmonella* is characterised by modifications in indicator medium colour located in one or both of the top parts of the tubes:

Tubes showing a positive reaction are subjected to selective agar isolation.

INTERNATIONAL OENOLOGICAL CODEX

Bacteriological control

- Dry boxes of Hektoën agar in an incubator at $46^{\circ}\text{C} \pm 1^{\circ}\text{C}$ until the drops on the surface of the medium disappear completely (lid removed and agar surface facing down).
- Take a wire hoop from the positive middle indicator and inoculate it into 5 ml of SPW, in a 16x160 mm sterile glass tube in order to dilute the culture.
- proceed as such with each positive tube.
- identify the dish and write down on the lid the number of the analysis and the letter of the tube being confirmed.
- homogenise the culture and take a wire hoop.
- isolate the Hektoën agar on the surface to enable the development of isolated colonies.
- incubate 24 hours at $37^{\circ}\text{C} \pm 1^{\circ}\text{C}$.
- Select at least 2 isolated colonies considered to be typical.

3. Confirmation

1. Biochemical tests

- identify the different colonies by using specific miniaturised galleries (API 20^E gallery) by referring to the recommendations of the manufacturer.
- incubate 24 hours at $37^{\circ}\text{C} \pm 1^{\circ}\text{C}$.
- At the same time inoculate: an agar to confirm the purity of the strain.
- 1 agar TSAYE inclined for serological typing.
- incubate 24 hours at $37^{\circ}\text{C} \pm 1^{\circ}\text{C}$.
- Read the API20E gallery following the manufacturer's indications.
- compare the profile obtained to the standard profiles given by the manufacturer.
- Store TSAYE agar in the refrigerator until utilisation.

2. Serological tests:

Tests are conducted if the strain profile corresponds to *Salmonella* following the

recommendations defined by the manufacturer from cultures obtained on agar and after eliminating self-agglutinating strains.

Elimination of self-agglutinating strains:

- Place a drop of 8.5 g/l saline solution on a perfectly clean glass slide.
- Disperse a little bit of the culture removed from the nutritive agar to obtain a homogeneous and cloudy solution using a Pasteur pipette.
- Oscillate the slide for 30 to 60 seconds.
- On a black background using a magnifying glass: if any observation reveals more or less distinct clusters, the strain is considered as being self-agglutinating and should not be subjected to serological typing.

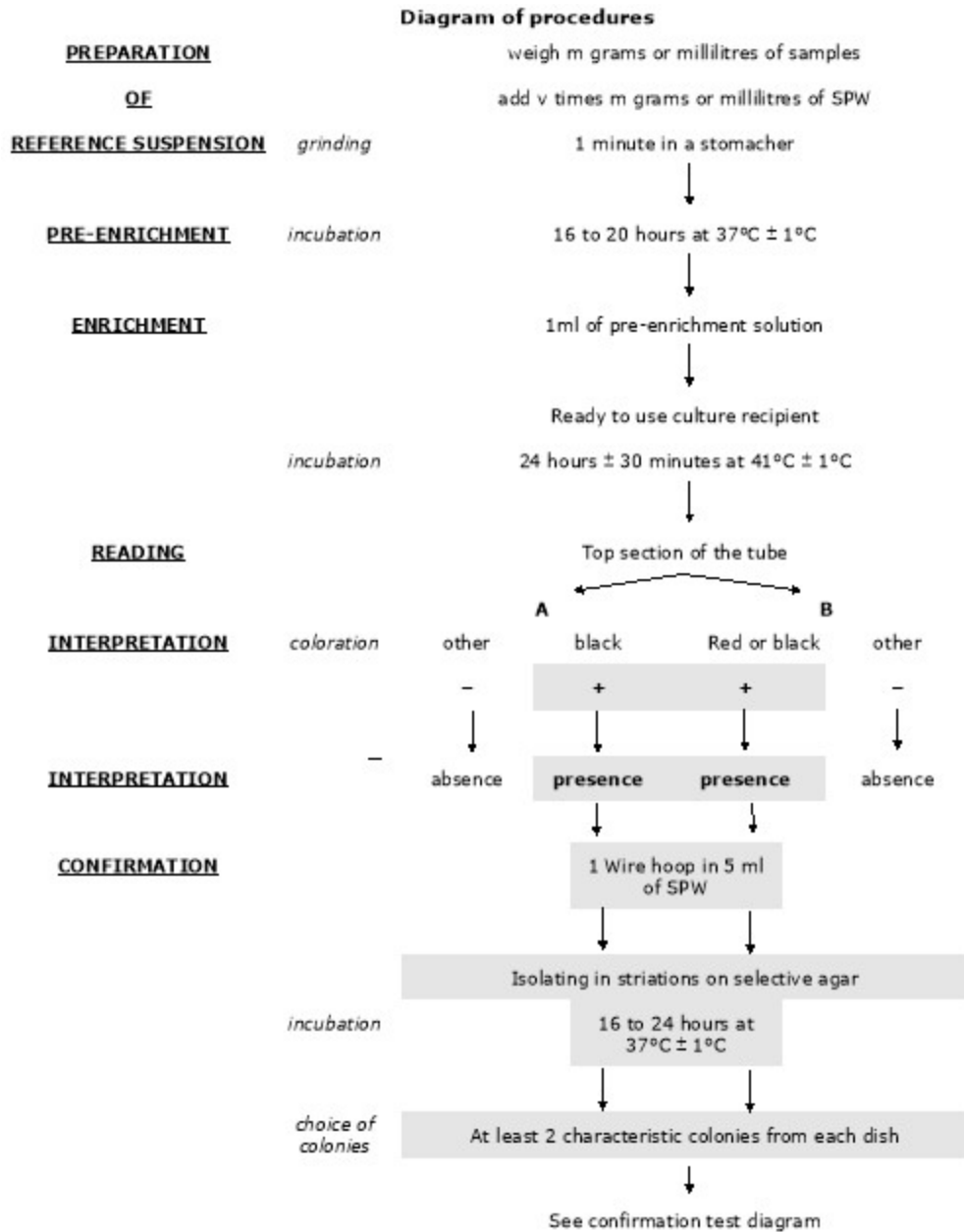
9.5. Results

According to the results based on the interpretation of biochemical and serological testing, the results are expressed as follows:

- Presence of *Salmonella* in m number of grams or ml of product.
- Absence of *Salmonella* in m number of grams or ml of product.

INTERNATIONAL OENOLOGICAL CODEX

Bacteriological control



INTERNATIONAL OENOLOGICAL CODEX

Bacteriological control

Test confirmation diagram

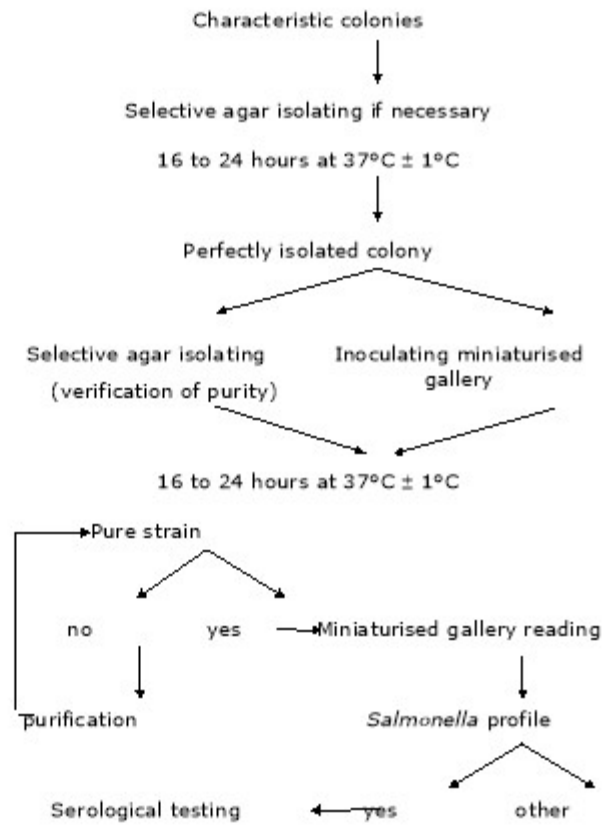
CHOICE OF COLONIES

PURIFICATION

incubation

BIOCHEMICAL IDENTIFICATION

incubation



SEROLOGICAL IDENTIFICATION

subculture

serology

On inclined TSAYE agar

- 1 tube for serology

absence of auto-agglutination and antigen agglutination O:

Salmonella

Diagram of biochemical and serological interpretations

INTERNATIONAL OENOLOGICAL CODEX

Bacteriological control

| Biochemical reactions | Self-agglutination | Serological reactions | Interpretation |
|-----------------------|--------------------|-----------------------|---|
| Typical | no | "O" positive antigen | <i>Salmonella</i> |
| Typical | no | Negative reactions | Sent to an authorised centre |
| Typical | yes | Not carried out | for determination of the serological type |

10. COUNT OF *ESCHERICHIA COLI* BY THE COUNTING OF COLONIES OBTAINED AT 44°C

10.1. Principle

Inoculating rapid *E. coli* agar in depth is carried out in a Petri dish for each of the dilutions chosen. Following a 24 hour incubation at 44°C, all characteristic colonies which appear are counted.

10.2. Apparatus and analytical conditions

- Cultures are carried out in a sterility zone ensured by the usage of a Bunsen burner.
- Plastic sterile Petri dishes with a diameter of 90 millimetres
- Sterile 16x60 cottoned glass test tubes
- Tube holder
- 2 ml plastic sterile pipettes with 0.1 ml graduations
- Water bath at 100°C ± 2°C
- Water bath at 47°C ± 2°C
- Tube shaker
- Oven at 44°C ± 1°C
- Bunsen burner
- Colony counter

10.3. Reagents

INTERNATIONAL OENOLOGICAL CODEX

Bacteriological control

- Sterile diluent for decimal dilutions: tryptone salt (TS)
- 16x160 pre-filled sterile tubes with 9ml of sterile TS
- Rapid *E.coli* cooling agar (R.E.C)

10.4. Procédure

10.4.1. Bacteriological agar medium

- Melt R.EC agar in a boiling water bath. Avoid overheating.
- Never use a culture medium above 50°C.
- For immediate usage, keep agar in the water bath at 47°C ± 2°C.
- Do not cool over 8 hours.
- For a deferred usage maintain the cooling agar in an oven at 55°C ± 1°C.
- The melted culture medium not used within 8 hours will not re-solidify for another usage.

2. Culture

- Homogenise each dilution before inoculation in Petri dishes and before carrying out decimal dilutions.
- Transfer 1 ml from the reference solution and/or the retained decimal dilutions in the respective Petri dishes. Change the pipette after each dilution.
- Introduce at least 20 minutes after inoculum, 15 to 20 ml of R.EC maintained in the water bath at 47°C ± 2°C.
- Slowly homogenise by shaking.
- Let solidify on the bench (lid up).
- Pour 4 to 5 ml of R.EC maintained at 47°C ± 2°C.
- Let solidify on a bench (lid up).
- Return the dishes and incubate in an oven 24 hours ± 2 hours at 44°C ± 1°C.

3. Count

Dishes containing between 15 and 150 characteristic colonies of two successive solutions are retained for counting.

INTERNATIONAL OENOLOGICAL CODEX

Bacteriological control

If the dish inoculated with 1 ml of first dilution contains characteristic colonies and fewer than 15, it will be retained for counting.

Characteristic colonies are counted using a counter or are counted manually after 24 hours ± 2 hours of incubation.

10.5. Results

10.5.1. General case

The dishes contain between 15 and 150 characteristic colonies for two successive dilutions.

10.5.1.1. Method of calculation

The two dishes retained have between 15 and 150 characteristic colonies. The number N of counted micro-organisms at 44.5°C per millilitre (ml) or by gram (g) of product is obtained by calculating the weighted mean on 2 dishes retained.

$$N = \frac{\sum c}{1,1d}$$

- $\sum c$: sum of characteristics counted on 2 dishes retained
- d : rate of dilution corresponding to first dilution

2. Expression of results

- Round off the number N to 2 significant digits
- Express to the tenth power

ex.: $1.6 \cdot 10^3$ / g or ml

10.5.2. Estimation of small numbers

If the dish inoculated with 1 ml of the 1st retained solution for analysis contains at least 15 characteristic colonies, express the result as follows:

$$N = c \frac{1}{d}$$

- c : sum of characteristic colonies counted
- d : rate of dilution

If the dish inoculated with 1 ml of the 1st retained solution for analysis does not contain any colonies, express the result as follows:

$$N = < 1 \frac{1}{d} \text{ micro-organism per g or ml}$$

- d : rate of dilution

11. COUNT OF STAPHYLOCOCCI WITH A POSITIVE COAGULASE BY THE COUNTING AND CONFIRMATION OF COLONIES OBTAINED AT 37°C

11.1. Principle

Decimal dilutions and inoculation on the surface of 1 Baird Parker agar drawn previously in a Petri dish with each of the dilutions retained, are carried out simultaneously from the sample (liquid product) or from the reference solution (other products).

After an incubation of 48 hours at 37°C the characteristic and/or non characteristic colonies are counted and then confirmed by the coagulase test.

11.2. Apparatus and analytical conditions

Cultures are carried out in a sterility zone ensured by the usage of a Bunsen burner.

- Sterile glass 16x160 cottoned test tubes
- Sterile plastic precipitating tubes with plastic stoppers
- 2 ml plastic sterile pipettes with 0.1 ml graduations
- Sterile plastic spreader
- Sterile Pasteur pipettes
- Tube shaker
- Incubate at 37°C ± 1°C
- Bunsen burner
- Colony counter

1. Reagents

- Sterile diluent for tryptone salt (TS) decimal dilutions.
- 16x160 sterile tubes pre-filled with 9ml of sterile TS.
- Baird Parker agar pre-poured in a Petri dish.

INTERNATIONAL OENOLOGICAL CODEX

Bacteriological control

- Tubes pre-filled with 5ml brain heart bouillon (sterile).
- Plasma of lyophilised rabbit rehydrated at the time of use.

2. Procedure

1. Culture

- Dry the agar plates in an incubator at $46^{\circ}\text{C} \pm 1^{\circ}\text{C}$ until the droplets on the surface of the environment have completely disappeared (cover is removed and the agar surface is turned downwards).
- homogenise each dilution prior to inoculation of the surface of agar plate surface before carrying out decimal dilutions.
- Place 0.1 ml of reference solution and/or the retained decimal dilutions on the agar surface while changing the pipette after each dilution.
- Carefully spread the inoculum as quickly as possible using a spreader without touching the edges of the plate.
- Leave the plates with the lids closed for 15 minutes at room temperature.
- Incubate 48 hours \pm 2 hours at $37^{\circ}\text{C} \pm 1^{\circ}\text{C}$

2. Counting

Dishes containing less than 150 characteristic and/or non-characteristic colonies on two successive dilutions are retained, but one of them must include at least 15 colonies. The characteristic and/or non-characteristic colonies are counted either manually or by using a counter.

Characteristic colonies

after 48 hours \pm 2 hours of incubation:

- Black or grey, shiny or convex with at least a 1 mm in diameter and a maximum of 2.5 mm in diameter outlined with lightening and precipitation halos.

Non-characteristic colonies

after 48 hours \pm 2 hours of incubation:

- Black and shiny with or without a white edge with lightening or precipitation halos absent or barely visible.
- Grey without light zones.

INTERNATIONAL OENOLOGICAL CODEX

Bacteriological control

11.2.2.3. Confirmation

Remove 3 characteristic colonies or 3 colonies of each type (characteristic or non-characteristic) and submit them to the coagulase test.

Coagulase test:

a) Bouillon culture:

- Take part of the selected colony using a Pasteur pipette sterilised with the Bunsen burner flame and inoculate into a brain heart bouillon.
- Repeat this manipulation for other selected colonies.
- Identify the tubes by sample number and its dilution with a blue marker for characteristic colonies and a green marker for non-characteristic colonies
- Incubate at $37^{\circ}\text{C} \pm 1^{\circ}\text{C}$ for 20 to 24 hours \square 2H.

b) Testing for free coagulase:

- Add 0.5 ml of culture obtained in brain heart bouillon to 0.5 ml of rehydrated rabbit plasma in a sterile precipitating tube and identify as follows.
- Repeat this procedure for each bouillon culture.
- Incubate 4 to 6 hours at $37^{\circ}\text{C} \pm 1^{\circ}\text{C}$.
- Check for the presence of coagulum or examine the tube after 24 hours \square 2 hours of incubation.

11.2.3. Results

Coagulase is considered positive when it occupies $\frac{3}{4}$ of the initial volume of the liquid.

11.2.3.1. General case

The plates contain a maximum of 150 characteristic and/or non-characteristic colonies.

Calculation procedure:

Number of Staphylococci with positive coagulase for each plate:

$$a = \frac{b^c}{A^c} \times c^c + \frac{b^{nc}}{A^{nc}} \times c^{nc}$$

- A^c is the number of spotted characteristic colonies
- A^{nc} is the number of spotted non-characteristic colonies

INTERNATIONAL OENOLOGICAL CODEX

Bacteriological control

- b^c is the number of characteristic colonies of positive Staphylococci coagulase
- b^{nc} is the total number of non-characteristic colonies of positive coagulase Staphylococci
- c^c is the total number of characteristic colonies of positive coagulase Staphylococci for the plate retained.
- c^{nc} is the total number of non-characteristic colonies of positive coagulase Staphylococci positive for the plate retained

Round off the number to the nearest whole number.

Number of positive coagulase Staphylococci in trials: N

The weighted average, calculated as follows from two successive retained solutions:

$$N = \frac{\sum a}{1,1 \times F} \times 10 \text{ positive coagulase Staphylococci by g or ml}$$

- $\sum a$: sum of positive coagulase Staphylococci colonies identified on 2 retained plates
- F: rate of dilution corresponding to the 1st retained dilution.

expression of results:

- round off the number N to the two largest whole digits
- express to the tenth power

| | | | |
|------|-----------------|--------------------|------------------|
| ex.: | Amount obtained | Amount rounded off | Result |
| | 36364 | 36000 | $3.6 \cdot 10^4$ |

11.2.3.2. Estimation of small numbers:

If the plate inoculated with 0.1 ml of the first dilution retained for analysis contains less than 15 colonies, the result will be expressed as follows:

$$N = a \frac{1}{d} \times 10 \text{ positive coagulase Staphylococci per g or ml}$$

- a : number of positive coagulase Staphylococci identified.
- d : rate of dilution for the first dilution retained for analyse.

If the dish inoculated with 0.1 ml of the first dilution retained for analysis contains no

positive coagulase Staphylococci the result shall be expressed as follows:

$$N < \frac{1}{d} \times 10 \text{ no positive coagulase Staphylococci per g or ml}$$

- d : Rate of dilution from the first retained dilution for analysis.

12. Coliform count by counting colonies obtained at 30°C

1. Principle

Inoculation in deeply in crystal violet to neutral red (VRBL) lactose bile agar was carried out in Petri dishes for each of the dilutions retained. After incubation for 24 hours at 30°C, the characteristic colonies were counted.

12.2. Apparatus and analytical conditions

Cultures are carried out in a sterile environment as ensured by a Bunsen burner.

- Plastic sterile Petri dishes with a diameter of 90 millimetres
- Sterile glass 16 x 160 cottoned tubes
- Tube holder
- 2 ml plastic sterile pipettes graduated at 0.1 ml
- Water bath at 47°C ± 2°C.
- Tube shaker
- Incubate at 30°C ± 1°C
- Incubate at 55°C ± 1°C
- Bunsen burner
- Colony counter

12.3. Reagents

- Sterile diluent for decimal dilutions: tryptone salt (TS)
- 16 □ 160 sterile tubes pre filled with 9ml of sterile TS
- Cooled crystal violet and neutral red lactose bile agar (VRBL).

12.4. Procedure

12.4.1. Agar medium

INTERNATIONAL OENOLOGICAL CODEX

Bacteriological control

- Once prepared, keep the VRBL agar cooled in the water bath at $47^{\circ}\text{C} \pm 2^{\circ}\text{C}$ (for immediate usage).
- Never use a culture medium at a temperature higher than 50°C .
- Do not cool over 8 hours.
- For a deferred usage, keep agar cooled in an incubator at $55^{\circ}\text{C} \pm 1^{\circ}\text{C}$.
- Melted culture mediums unused within 8 hours, shall never re-solidify for later usage.

12.4.2. Culture

Homogenise each dilution before inoculating in Petri dishes prior to carrying out decimal dilutions.

Transfer 1 ml of reference solution and/or decimal dilutions retained in respective Petri dishes with pipettes changed after each dilution

- Introduce up to 20 minutes after the inoculum 15 to 20 ml of VRBL maintained in the water bath at $47^{\circ}\text{C} \pm 2^{\circ}\text{C}$.
- Slowly homogenise by shaking.
- Let solidify on laboratory bench (lid upwards).
- Pour approximately 5 ml of VRBL maintained in the water bath at $47^{\circ}\text{C} \pm 2^{\circ}\text{C}$.
- Let solidify on laboratory bench (lid upwards).
- Turn over dishes and incubate immediately 24 hours \pm 2 hours at $30^{\circ}\text{C} \pm 1^{\circ}\text{C}$.
-

3. Count

Dishes containing less than 150 characteristic or non-characteristic colonies based on two successive dilution are retained, but one of them must contain at least 15 characteristic colonies.

If only the dish inoculated with 1 ml of the 1st dilution contains under 15 characteristic colonies, then the dish will be retained for counting.

Characteristic colonies are counted manually or by using a counter.

Characteristic colonies after 24 hours \pm 2 hours of incubation

- violet colonies surrounded sometimes by a red area (bile precipitation)

INTERNATIONAL OENOLOGICAL CODEX

Bacteriological control

- diameter \geq 0.5 mm

12.5. Results

12.5.1. General case

Dishes containing less than 150 characteristic or non-characteristic colonies, based on two successive dilutions with one containing at least 15 characteristic colonies.

Method of calculation:

Number N of micro-organisms counted at 30°C per millilitre (ml) or by gram (g) of product is obtained by calculating the weighted average of 2 retained dishes.

$$N = \frac{\sum c}{1,1d}$$

- $\sum c$: sum of characteristic colonies counted of 2 retained dishes
- D : dilution rate corresponding to the 1st dilution

Expression of results:

- round off the number N to the 2 largest digits
- express to the tenth power

ex: $1.6 \cdot 10^3$ / g or ml

12.5.2. Estimation of small numbers

If the dish inoculated with 1 ml of the 1st dilution retained for analysis contains less than 15 characteristic colonies, the result will be expressed as follows:

$$N = c \frac{1}{d}$$

- c : sum of characteristic colonies counted
- d : rate of dilution

If the dish inoculated with 1ml of the 1st dilution retained for analysis contains no colonies then the result will be expressed as follows:

$$N = < 1 \frac{1}{d} \text{ micro - organisms per g or ml}$$

- d : rate of dilution.

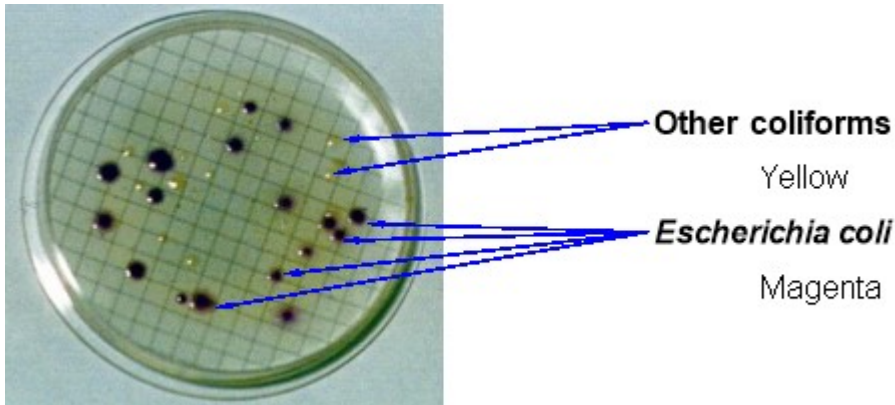
Annex 1: Review of methods of coliform research- *Escherichia coli* and

*Staphylococcus***1. Selective- Differential medium for coliforms. Desoxycolate agar****Ingredients/l**

| | |
|-------------------------|--|
| Peptone | 10.0 g |
| Lactose | 10.0 g |
| Sodium desoxycolate | 1.0 g (Inhibition of the flora accompanying coliforms) |
| Sodium chloride | 5.0 g |
| Dipotassium phosphate | 2.0 g |
| Ferric ammonium citrate | 1.0 g |
| Sodium citrate | 1.0 g |
| Bacteriological agar | 15.0 g |
| Neutral red | 0.03 g |

**2. Selective- differential medium for Escherichia coli. MET**

Sodium laurilsulphate and sodium desoxycolate are used as selective factors, in accordance with their properties to inhibit the development of Gram-positive cocci and sporulated bacteria. The differential nature of the method is provided by the chromogen 5-bromo, 6-chloro-indolyl- β -D-glucuronide.



3. Selective- Differential medias for Staphylococcus

| | |
|--|-----------|
| Giolitti and Cantoni medium | |
| Composition (g) for 1 litre of medium: | |
| Tryptone | 10,0 |
| Meat extract | 5,0 |
| Autolytic yeast extract | 5,0 |
| Glycine | 1,2 |
| Mannitol | 20,0 |
| Sodium piruvate | 3,0 |
| Sodium chloride | 5,0 |
| Lithium chloride | 5,0 |
| Tween 80 | 1,0 |
| pH medium | 6,9 ± 0,2 |

INTERNATIONAL OENOLOGICAL CODEX

Bacteriological control

| Baird Parker solid medium Composition (g/l) | |
|--|---|
| Tryptone | 10,0 |
| Meat extract | 5,0 |
| Autolytic yeast extract | 1,0 |
| Sodium pyruvate | 10,0 |
| Glycine | 12,0 |
| Lithium chloride | 5,0 |
| Bacteriological agar | 20 |
| Egg yolk emulsion | 47 ml |
| Potassium tellurite at 3,5 % | 3 ml |
| Sulfamehazine | 0,05 g/l (if necessary inhibit <i>Proteus</i>) |
| pH medium | 7,2 ± 0,2 |

^[1] Tomato juice is used to improve lactic bacterial growth. Preparation: take commercial (without additives) or homemade tomato juice, centrifuge at 4000g for 20 min, filter if necessary and use the clear juice.